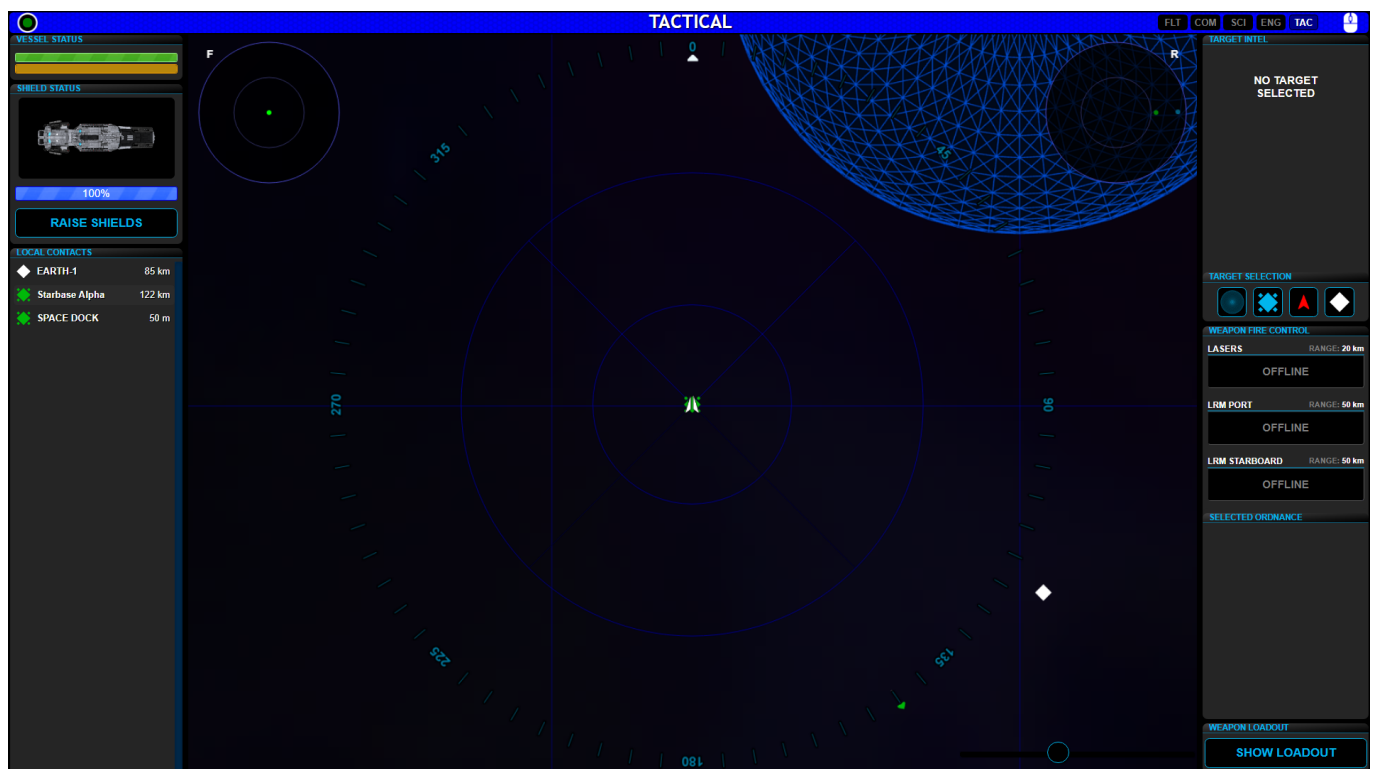




Tactical

1. The Tactical Officer controls the ships ordinance
2. The alert status of the ship limits what the Tactical officer can do IE: The ship's shields can only be raised in Yellow or Red Alert. The ship's weapons can only be fired when in Red Alert
3. Missiles
 1. Missile Ranges
4. Lasers
 1. Laser Range
5. Shields
 1. Shield Recharge Rate

Tactical Console



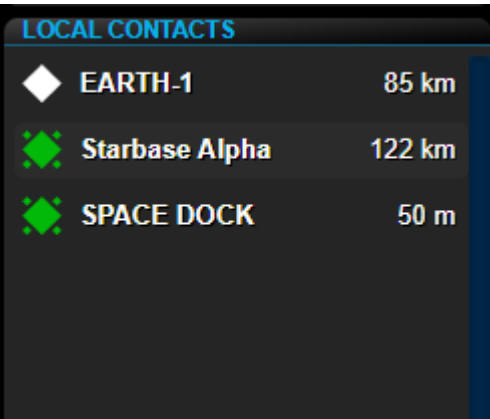
Left Panel

Vessel and Shield Status



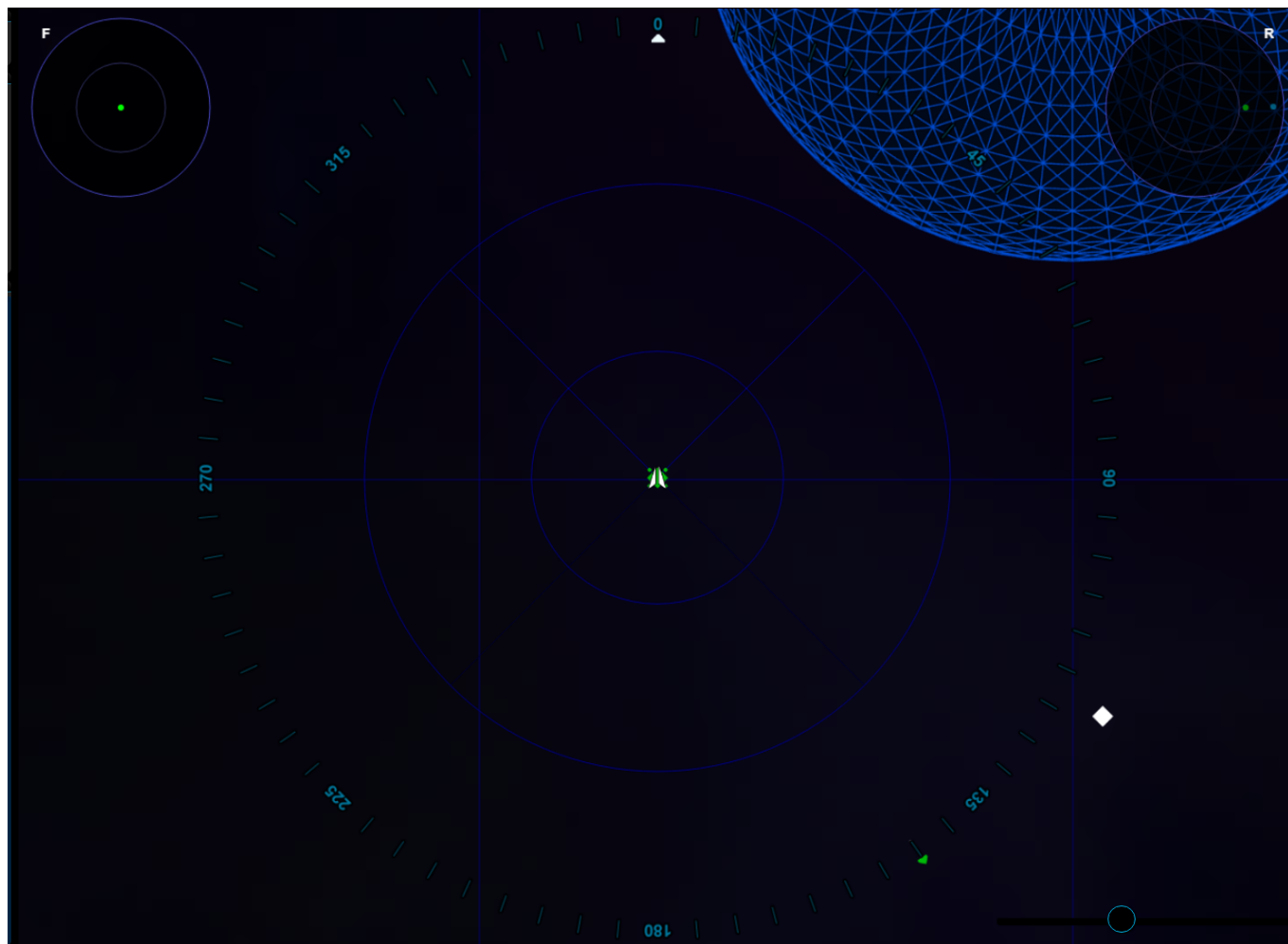
The Vessel Status gives the current status of the Hull and Energy Consumption. The Shield Status allows Tactical to raise the shields in Condition Yellow or Red. In Condition Green or Blue, the shields will automatically be disabled.

Local Contacts



The Local Contacts list allows Tactical to select their targets from a list of contacts rather than select an object from the Local Radar.

Center Panel



Local Radar

The [Local Radar](#) for Tactical has a few modifications that aren't on the local radar found on other Bridge Stations. There is no LSG Toggle, so the Tactical view will always be of the local space. Other modifications are described below.

Fish Eye Radar

The upper left and upper right of the local radar screen provides a forward and rear facing fisheye radar. The center circle represents the 90 degree arc of the area in front of or behind the Horizons, and the outer circle represents objects that are more to the side.

Firing Arcs

Tactical has a pair of concentric circles with a wedge centered on the Horizons. These circles represent firing ranges for the weapon system. The outer circle represents Missile Range, while the inner circle represents the laser range. The wedge represents the forward firing arc that the majority of the Horizon's lasers are able to fire. You can find more information about missiles and lasers in [Combat](#).

Weapon Loadout

WEAPON LOADOUT

PROJECTILE

Forward P

ION

Forward S

ION

Port A

PULSE

Port B

PULSE

Port C

PULSE

Starboard A

PULSE

Starboard B

PULSE

Starboard C

PULSE

Aft P

PULSE

Aft S

PULSE

MISSILE

LRM Port

LRM FR

LRM Starboard

LRM FR

Right Panel

Target Intel

TARGET INTEL

NO TARGET
SELECTED

TARGET SELECTION

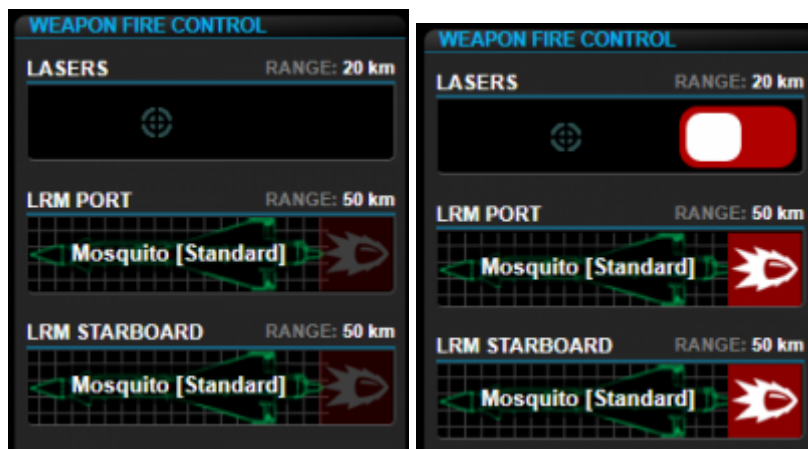
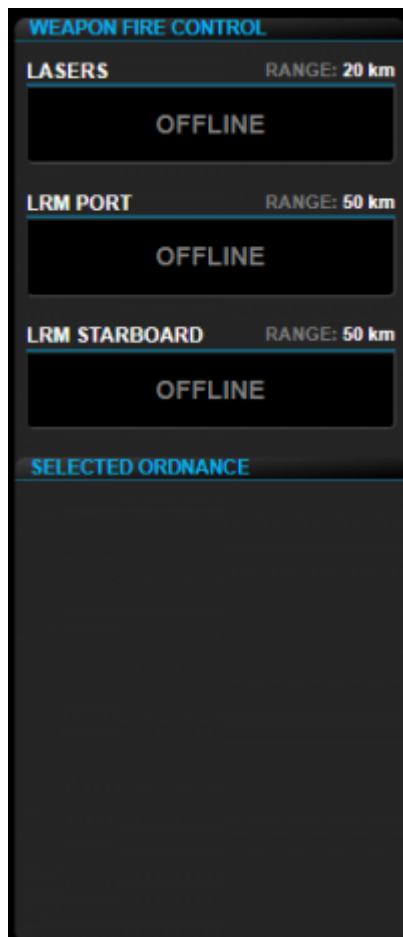
The [Target Intel](#) component gives Tactical information about the currently selected object.

Weapon Fire Control

<http://wiki.starshiphorizons.com/>

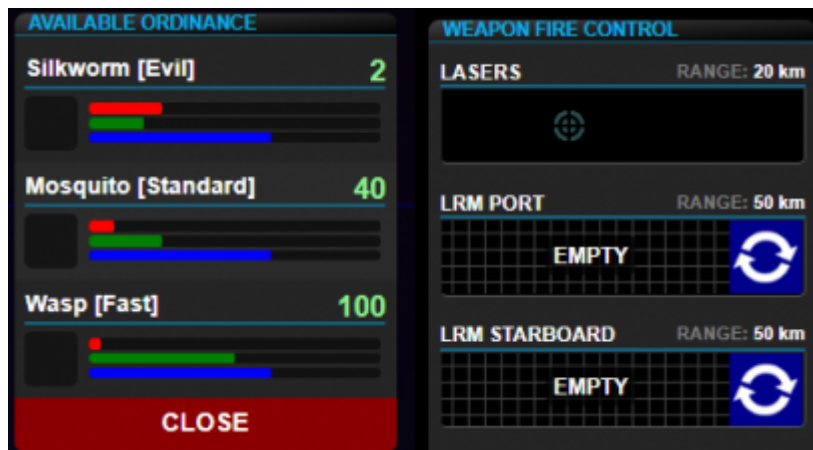
Printed on 2025/08/07 13:46

The Weapon Fire Control and Selected Ordinance gives Tactical control of the weapons systems. On the Horizons, there are the Lasers, and Port and Starboard Long Range Missiles. These systems will be offline in conditions Green and Blue.



Starting in condition Yellow, you can load missiles into either LRM, but cannot fire. In condition Red you'll be able to activate the lasers as well as fire the missiles.

Ordinance



Selecting "Selected Ordinance" or the empty LRM will bring up Available Ordnance. Here will be listed all of the available ordinance currently on the Horizons, with the Name and the quantity, as well as relative stats of each ordinance. The Red bar is a measure of the power of the ordinance. The Green bar is the speed, both to load the ordinance, and its velocity once fired. And the Blue bar is the Range of the ordinance.

Weapon Loadout Toggle



Used to see the weapon loadout on the main screen, or to return back to the local radar.

Bridge Stations : [Flight](#) | **Tactical** | [Science](#) | [Operations \(Comms\)](#) | [Engineering](#) | [Captain](#)
Ancillary Consoles/Displays : [Center](#) | [Stellar Navigation](#) | [Stellar Body](#) | [Star System](#) | [Alert Status](#) |
[Shield Status](#) | [Cargo Hold](#) | [Radar](#) | [IRIS](#)
In Progress (Incomplete) Consoles/Displays : [Crew Roster](#) | [Collision Alarm](#) | [Dashboard](#) | [Deck Status](#) |
[Target](#) | [Scan](#) | [Vessel Status](#)
Admin Consoles : [Game Master](#) | [Mission Control](#) | [Mission Status](#) | [Designer](#)

From:
<http://wiki.starshiphorizons.com/> - **Starship Horizons Wiki**

Permanent link:
<http://wiki.starshiphorizons.com/gameplay:stations:tactical?rev=1621123739>

Last update: **2021/05/16 00:08**

